

CAMPBELL ELEMENTARY SCHOOL
2008-2009 Annual Report

General Information

Campbell Elementary School serves K-4 students of the Cass City Public School District. It was originally constructed in 1950, with additions being made in 1954, 1960, 1962, 1979, 1994, 1997 and 2000. Window replacements were completed in 2001. The building has 23 classrooms, a media center, a gymnasium and various offices and smaller workrooms.

Campbell staff members are dedicated to providing education for students in a friendly, caring and safe environment. A well-rounded curriculum is provided for all students.

<u>4th Friday Four Year</u>	
<u>Enrollment Rate</u>	
2007-2008	447
2006-2007	464
2005-2006	474
2004-2005	517
2003-2004	517
2002-2003	544

Campbell had **5** retentions for the 2007-2008 school year. This represented 1.1% of the school population. 7 Title I assistants worked with 220 students in grades K – 4. Campbell has a free and reduced rate of 52%.

SCHOOL IMPROVEMENT

Campbell Elementary School is committed to the school improvement process. The following mission statement has been adopted by the total staff. **All school personnel will accept the responsibility to provide the opportunity for all students to reach their full potential in a global society.** The Campbell School Improvement process is ongoing. It is developed as a 3-5 year plan, but changes or modifications are made yearly as needed. New goals were added this year to address targeted areas of the MEAP Assessment Test for English/Language Arts, and mathematics. Additional goals for other areas were also added. These goals included;

1. During the 2008-2009 school year Campbell school will be working to align the new science and social studies GLECS. Campbell has purchased the KC-4 curriculum to help them with this process.
2. During the 2008-2009 Campbell school will work toward improving all curricular alignment through K-4 programs with continues emphasis placed on literacy improvement and data based decision making.

3. The K-4 staff will work towards fully implementing the MiBISi program for behavior and reading.
4. Staff will continue work on the 3 tier intervention in reading and the testing process to identify students who need researched base interventions.
5. Develop a K-12 writing curriculum. (Step up to Writing)

CURRICULUM

The State's Standards and Benchmarks have been implemented across all curriculums in our elementary school. We continue to strive to meet all goals set forth by the State. As a building, we identified a number of areas to be addressed. These included writing strategies and programs to help us improve our ELA MEAP scores, parent involvement, and developing grade level assessments. Continuation of such program strategies as Balanced Literacy, literacy grouping and guided reading,, MLPP assessments, keyboarding for 3rd and 4th graders, and the Michigan Integrated Behavior and Learning System Initiative was a very big undertaking for our staff. We are in the first stages of implementing the behavior systems and will continue to work towards implementing the reading systems as we move into the 2008-2009 school year. The core areas of mathematics, English/Language Arts, science, and social studies have been aligned with the State's Standards and Benchmarks. Curriculum mapping has been completed for math and ELA, and work continues to develop the grade level assessment tests for grades K-4. Campbell has purchased the KC-4 program to help implement the new standards in Social Studies and Science.

Professional Development is an ongoing process at our school. During the 2007-2008 school year the staff received a great deal of professional development in math, on how to use MEAP data to address needs throughout our curriculum. The staff spent a great deal of time looking at reading and math data. Our students were tested 3 times this past year in both reading and math. The data was shared with the teachers so they could identify students who were not meeting grade level expectations. If students were not reading at grade level then the students were provided a researched based intervention in attempt to move them to the correct reading level.

ACCREDITATION

Campbell Elementary is currently interim accredited by the Michigan Accreditation Program. Campbell Elementary received an A grade under Michigan's Education Yes program and has satisfactorily met its AYP (adequate yearly progress) requirements for the 2008-2009 school year in all core areas tested, and for all demographic groups. (see accompanying chart). (The Michigan AYP target scores for 2007-2008 were; mathematics-56%, ELA-48% for levels 1 & 2).

PARENT PARTICIPATION

71% of our students had parent representation during the fall Parent/Teacher Conferences. Last year there was 75% representation.

At this year's open house, 68% of our students were represented by parents. Last year we had 65% attendance by parents. During the 2007-2008 school year thousands of hours of volunteer time were logged, with the help of over 50 regular parent/adult volunteers, and others who volunteered from time to time.

AVERAGE DAILY ATTENDANCE

Campbell Elementary School encourages and honors students with good attendance. Perfect attendance certificates for all students are awarded each year in the Spring. The 2007-2008 average daily attendance rate continues to exceed 95% with 1 students receiving perfect attendance awards.

STAFF DEVELOPMENT

Staff development needs are evaluated on an annual basis. This year's staff received training in the areas of math strategies, grade level assessment in math, and changes in the state curriculum. The staff also received training on how to use MEAP data to improve there teaching strategies. The staff spent a great deal on time working on a new program for reading and behavior that will be used throughout Campbell School next year. Our staff also spent a great deal of time reviewing different reading intervention to be used at each grade level for the 2007-2008 school year. Many of our staff also received training in the area of writing. We have decided to use a new program called Step up to Writing to help improve our writing scores and to become more consistent in how our staff in teaching writing from grade to grade. Further training was gained by the individual pursuing various needs through individual conferences attended throughout the year.

STUDENT ASSESSMENT

Subject matter is assessed by teachers using a variety of tools including written instruments and portfolios. Test. The MEAP test is administered to Campbell's 3rd and 4th grade students. The staff also used an ELA and math assessment that is given 3 times throughout the year at every grade level. Every student at Campbell was given the DIBELS screening 3 times this past year to assess their reading levels. Campbell students were also given the AIMS math screening 3 times this past year to assess their math levels. Also in the spring we have stared a writing screening as well to help our staff assess which students are not meeting expectation in writing.

THIRD GRADE MEAP COMPARISONS Cass City and State Averages

	State	<u>2005-2006</u>			
		<u>CC</u>	<u>M</u>	<u>F</u>	<u>ED</u>
MATH	87	89	85	93	84
READING	87	91	91	91	88
WRITING	51	49	49	49	41
ELA	78	84	82	87	80

2006-2007

	<u>State</u>	<u>CC</u>	<u>M</u>	<u>F</u>	<u>ED</u>
Math	88	95	93	98	91
READING	87	88	85	93	90
WRITING	52	46	41	50	40
ELA	79	84	79	88	83

2007-2008

	<u>State</u>	<u>CC</u>	<u>M</u>	<u>F</u>	<u>ED</u>
Math	90	95	95	95	90
READING	86	91	90	92	85
WRITING	57	69	48	79	58
ELA	81	87	83	92	83

**FOURTH GRADE MEAP COMPARISONS
Cass City and State Averages**

2003-2004

	<u>State</u>	<u>CC</u>	<u>M</u>	<u>F</u>
MATH	73	82	85	80
READING	64	73	64	82
Writing				
ELA				

2004-2005

	<u>State</u>	<u>CC</u>	<u>M</u>	<u>F</u>	<u>ED</u>
MATH	73	85	82	90	84
READING	82	94	92	96	97
Writing	46	67	53	80	54
ELA	69	84	74	94	81

2005-2006

	<u>State</u>	<u>CC</u>	<u>M</u>	<u>F</u>	<u>ED</u>
MATH	82	84	85	83	71
READING	83	86	88	84	78
Writing	55	57	63	52	49
ELA	76	76	74	77	65

2006-2007

	State	CC	M	F	ED
Math	85	87	85	89	78
Reading	85	91	91	91	50
Writing	53	45	55	51	50
ELA	78	83	80	87	80

2007-2008

	State	CC	M	F	ED
Math	86	96	98	95	98
Reading	84	88	88	88	87
Writing	44	45	40	50	46
ELA	76	83	80	85	80

POINTS OF PRIDE

1. Campbell's MEAP scores continue to improve, and out perform the State averages. Campbell received an "A" grade for its AYP status.
2. Reading Counts added many hundreds of new titles to our library for our students to use. Second graders and multi-age 1-2 started Reading Counts at the start of the second semester. This year, one 4th grader read more than 500 points to earn a gold medal and have their names added to the plaque in the library. Students read over 8,400 books worth 19,000 points.
3. Our Young Author's Program sponsored a visit by illustrator, author Lisa Wheeler. She participated in assemblies for our students and staff during March is Reading Month.
4. Campbell works hard to encourage its students to read. During "March Is Reading Month", students participated in a number of activities including silent reading, and being read to by guest readers,
5. Numerous grade level activities were held at our school including Grandparent's luncheon, Michigan History display, Beach Day, Pajamarama, pen pal exchange, grand person experiences, 2nd and 3rd.
6. Campbell is fortunate to have the help of many volunteers who provide thousands of hours of work for our school and students.
7. Assemblies are provided each year for Campbell students. This year's assemblies included visits from Birds of Prey. We also had our own high school and middle school students perform plays, musicals, and other assembly topics.
8. This year we had 8 different rewards assemblies for our students. Students that earned good behavior slips could attend a monthly rewards assembly.
9. Technology improvements continue to be a major focus in our building. Continual upgrades to our system are being made. A new district technology plan has been developed to align with the Technology Standards and Benchmarks. Teachers at all grade levels are integrating technology projects into their curriculum
10. Campbell's Junior Banking program continues to be successful. The First Bank of Campbell, under the supervision of Pam LeFave from Thumb National of Cass City, allows older students to work in bank positions such as vice president, teller, security guard, advertising, etc. as Campbell runs its bank. In this Jr. Banking program, all student in grades 2-4 can open a savings account and deposit money in our bank, (banking is twice a month), throughout the school year. Thumb National pays interest

on all monies saved, and students are given their savings plus interest back at the end of the school year. Jr. Achievement, (an economics program taught in the schools by business and industry people), continues to be offered, using community resources to teach students about economics and how it applies to their world.

11. Campbell's strength continues to lie in its diversity of choice and offerings of service to its students. Parents can choose from traditional classroom education to multiage offerings, to classrooms who specialize in teaming practices. Special Education offers a classroom where students are mostly self contained, a classroom where students are pulled in for specific instruction in academic or behavioral areas for brief periods of time before returning to their regular rooms, and inclusion when available, where the special education teacher goes into the regular classroom and team teaches with that teacher while providing extra support for the special education and regular students in that room.
12. This year our school social worker and big brother and big sister of Tuscola County started a lunch buddy for under privileged students at our building. We had over 50 students who had lunch buddies from either the middle school or high school.
13. We continued a tutorial program in math and ELA for students 2-4 on the computer which could be used in the classroom or could be assessed at home for students to work on math or ELA. This program is called Study Island. Our students have gone through over 181,000 questions for the year.
14. Eight Campbell Fourth Graders represented their school at this year's 4th grade county spelling bee as spellers and alternates. The entire group represented themselves and their school very well.
15. Our fourth graders participated in an award's assembly as part of their graduating to the fifth grade at the middle school next year. All students received recognition.
16. The kindergarten children were honored with the eighth annual Kindergarten Graduation. Evening ceremonies for Mrs. Tuckey's, Mrs. LaBerge's and Mrs. Jaworski's classrooms were held, and attendance was standing room only.
17. Classrooms make yearly field trips to various places around the State. Some of the places visited included Bay City State Park and it's Nature Center, the planetarium in Bay City, Cross Roads Village, the Heritage Theatre, Gagetown's Octagon Barn, Huckleberry Railroad, and other shorter trips to local establishments.
18. Eight students won awards for pumpkin decorations at this year's Tuscola County Pumpkin Festival. Some students had their artwork on display at the town library during the annual art show.
19. Campbell participated in the PE-Nut Grant through Tuscola ISD. This program educated our students on healthy lifestyle choices.

20. Campbell was recognized with a 1st place plaque for a Healthy School Environment by the State of Michigan.

Local Assessment Data

Kindergarten

Gesell Test	Spring
Kindergarten Checklist	Fall/Spring
Observation Survey	Spring
AMIS Math Screening	Fall/Spring/Winter
ELA/Math Assessment	Fall/Winter/Spring
Writing Screening	Fall/Winter/Spring
DIBELS	Fall/Winter/Spring

First Grade

Reading Recovery Observation Survey	Fall
DRA (Developmental Reading Assessment)	May
MLPP (Michigan Literacy Proficiency Profile)	All year
AMIS Math Screening	Fall/Winter/Spring
DIBELS	Fall/Winter/Spring
ELA/Math Assessment	Fall/Winter/Spring
Writing Screening	Fall/Winter/Spring

Second Grade

MLPP (Writing Assessment)	All year
DRA (Developmental Reading Assessment)	May
MLPP (Michigan Literacy Proficiency Profile)	All year
ELA/Math Assessment	Fall/Winter/Spring
AMIS Math Screening	Fall/Winter/Spring
DIBELS	Fall/Winter/Spring
Writing Screening	Fall/Winter/Spring

Third Grade

DRA (Developmental Reading Assessment)	May
MLPP (Writing Assessment)	All year
MLPP (Michigan Literacy Proficiency Profile)	All year
MEAP (Michigan Educational Assessment Program)	Fall
ELA/Math Assessment	Fall/Winter/Spring
AMIS Math Screening	Fall/Spring/Winter
Writing Screening	Fall/Winter/Spring
DIBELS	Fall/Winter/Spring

Fourth Grade

MEAP (Michigan Educational Assessment Program)	Fall
ELA/Math Assessment	Fall/Winter/Spring
AMIS Math Screening	Fall/Winter/Spring
DIBELS	Fall/Winter/Spring
Writing Screening	Fall/Winter/Spring

K – 4 students are assessed with local and normal assessment tests to determine academic growth and progress. We look at three types of data; Outcome Data to determine if our students, (and programs), are successful. Demographic Data to determine how each subgroup is achieving and Process Data to determine if our curriculum is aligned with the State’s Curriculum framework and our students are meeting State and National expectations for student achievement.



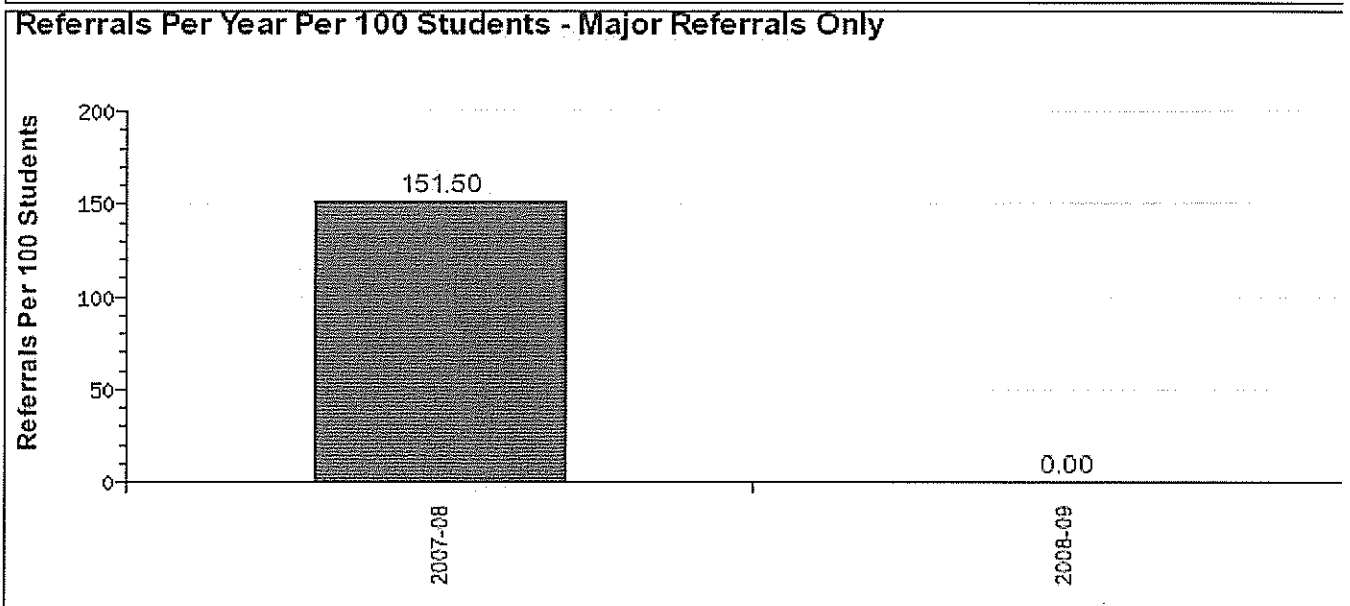
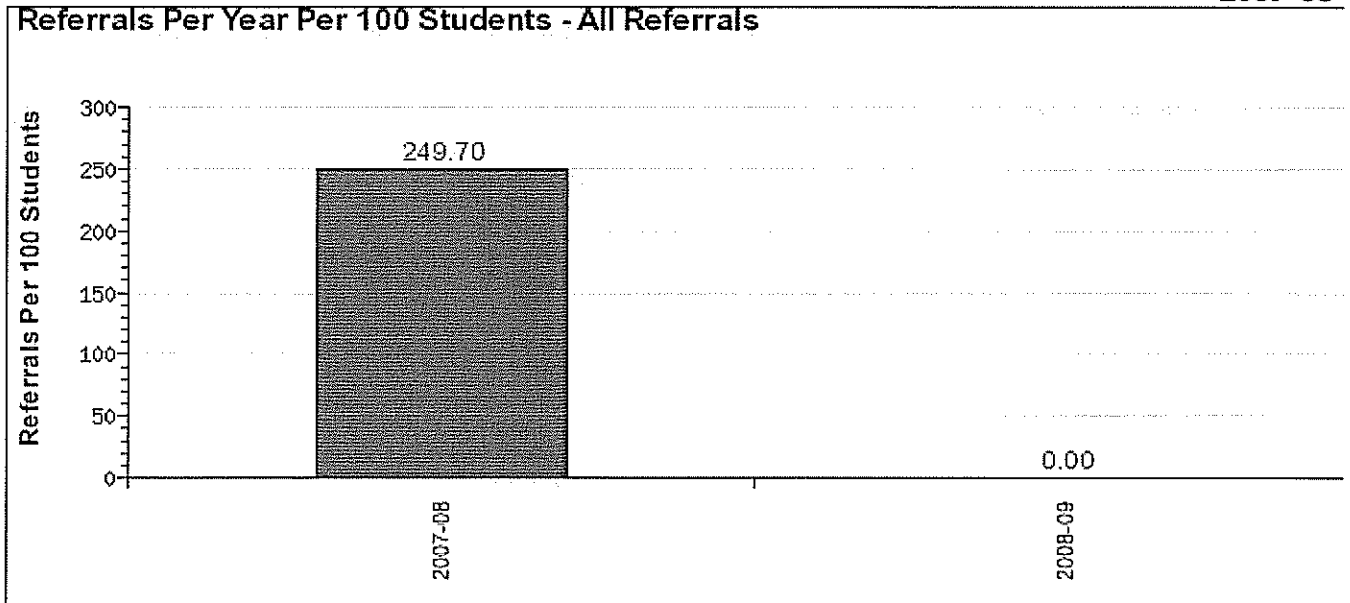
School-wide Information System

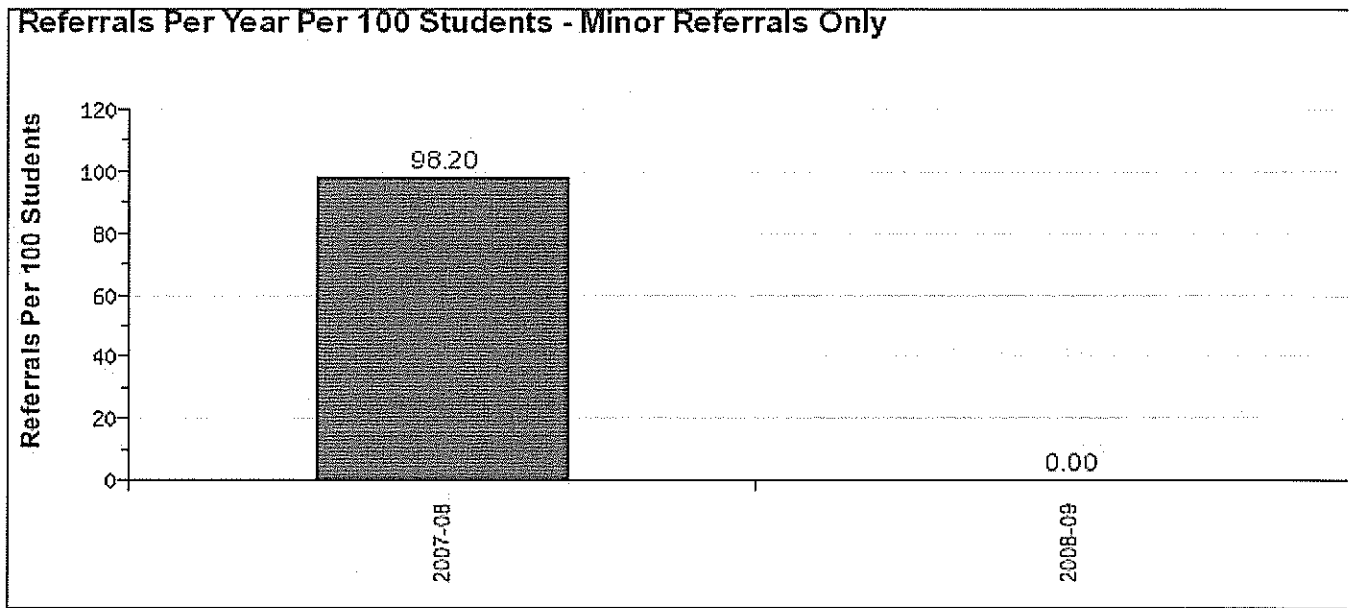
Year End Report

Campbell Elementary School

Referrals Per 100 Students

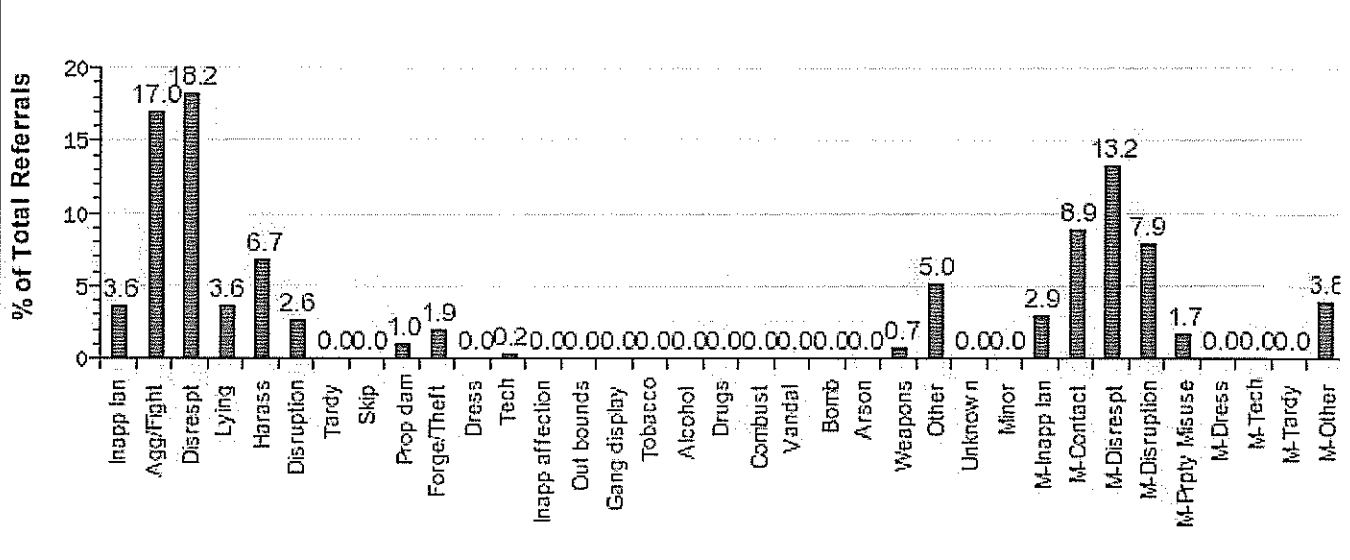
Generated: 06/04/2008, 2:26:54 PM
2007-08



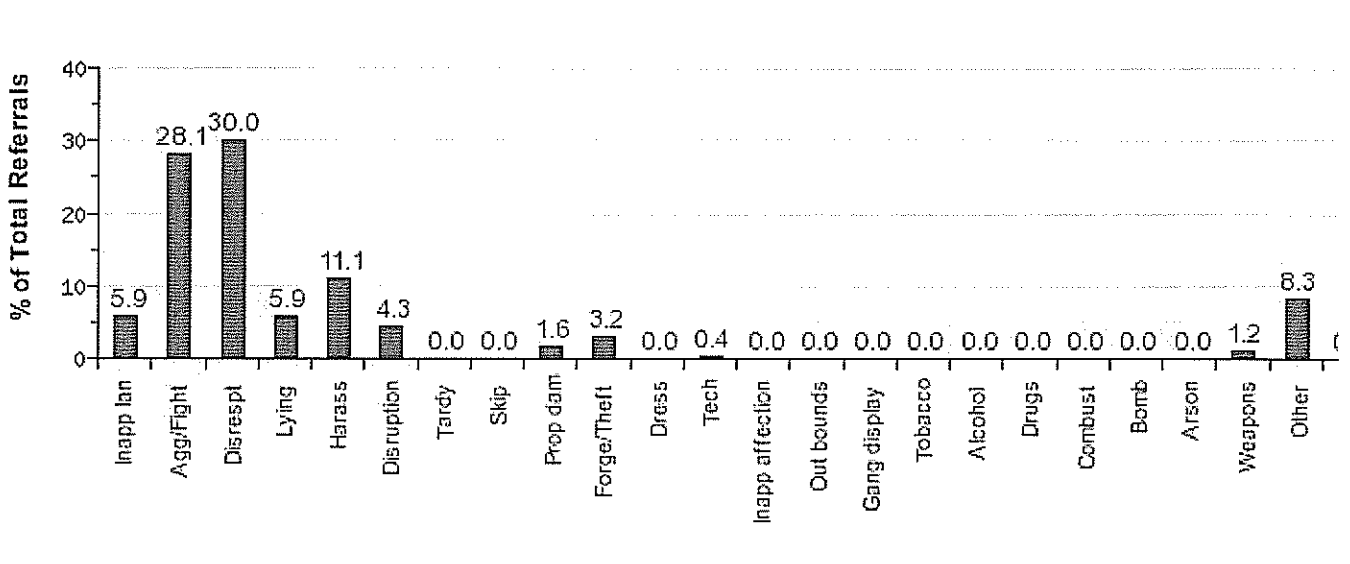


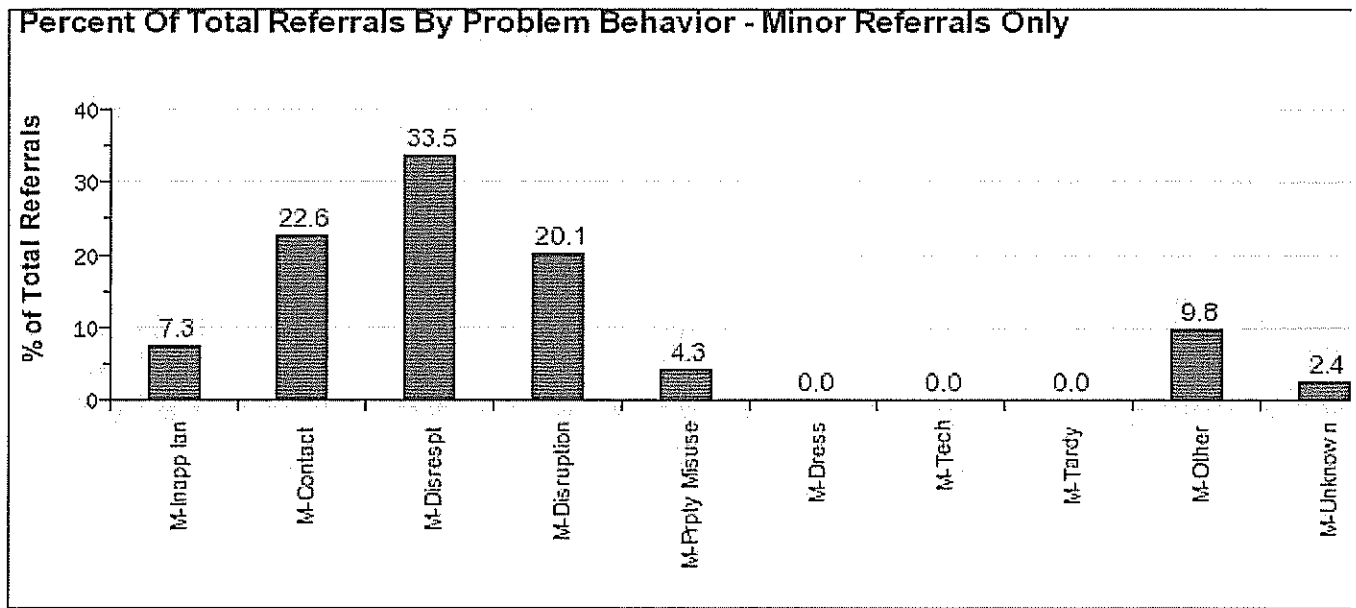
Problem Behavior Report

Percent Of Total Referrals By Problem Behavior



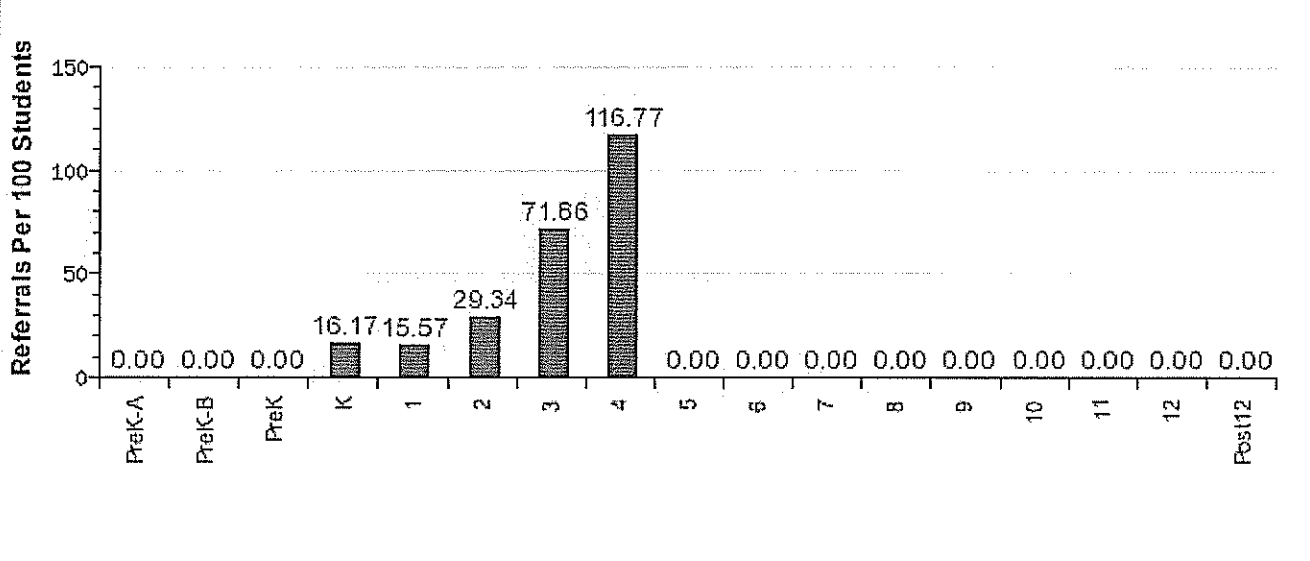
Percent Of Total Referrals By Problem Behavior - Major Referrals Only



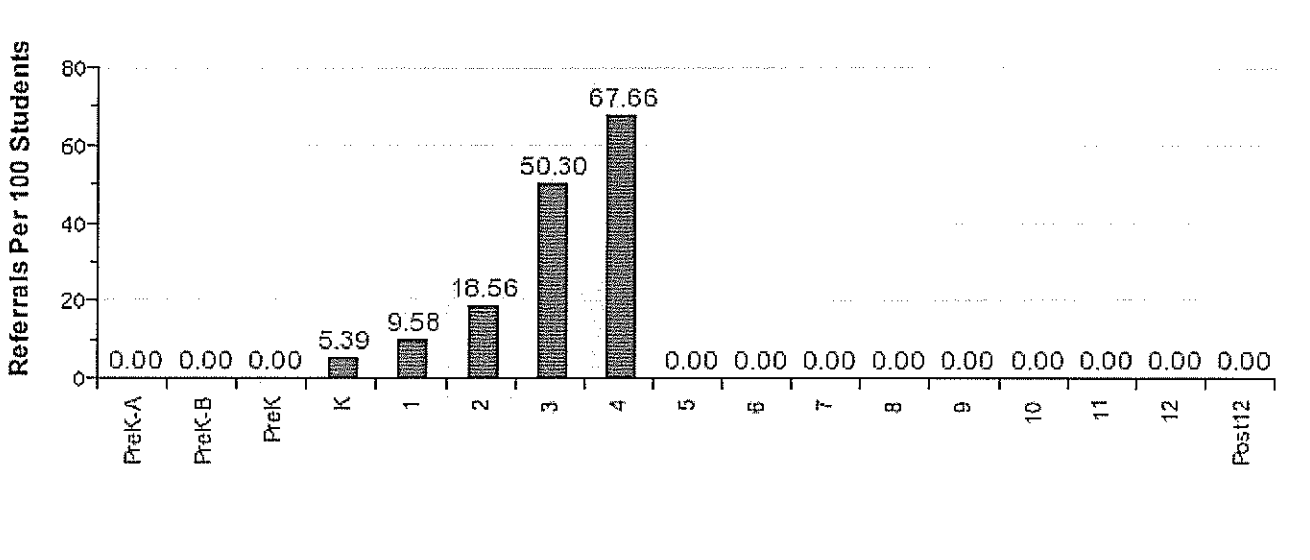


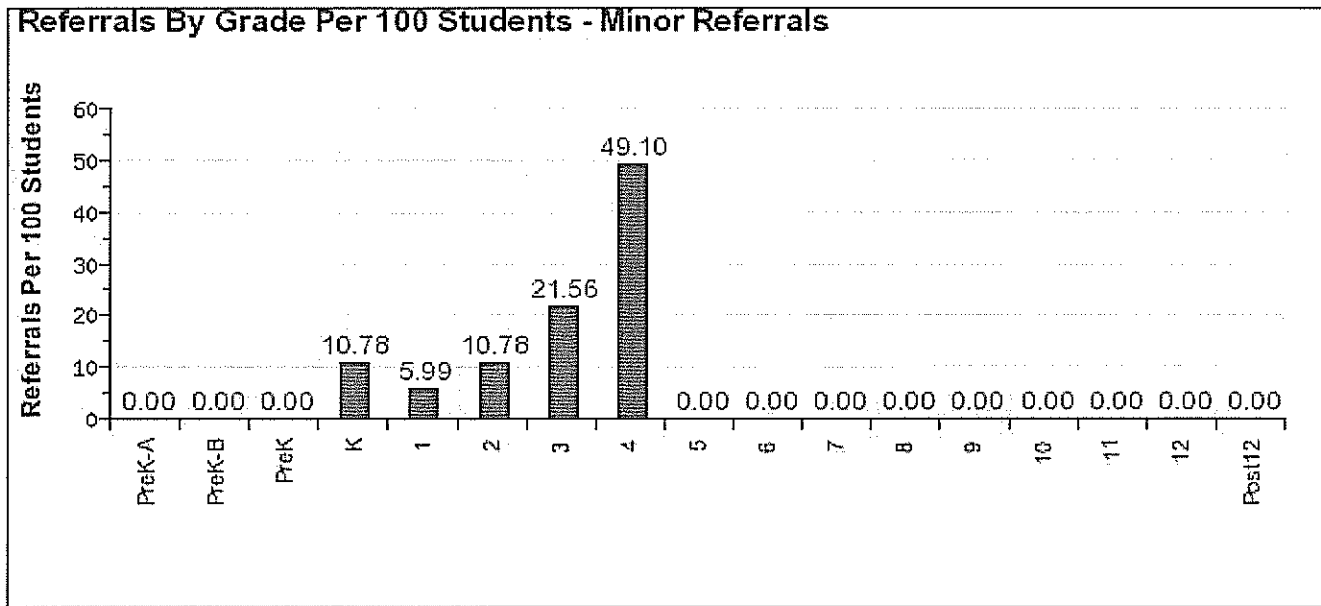
Grade Report

Referrals By Grade Per 100 Students - All Referrals

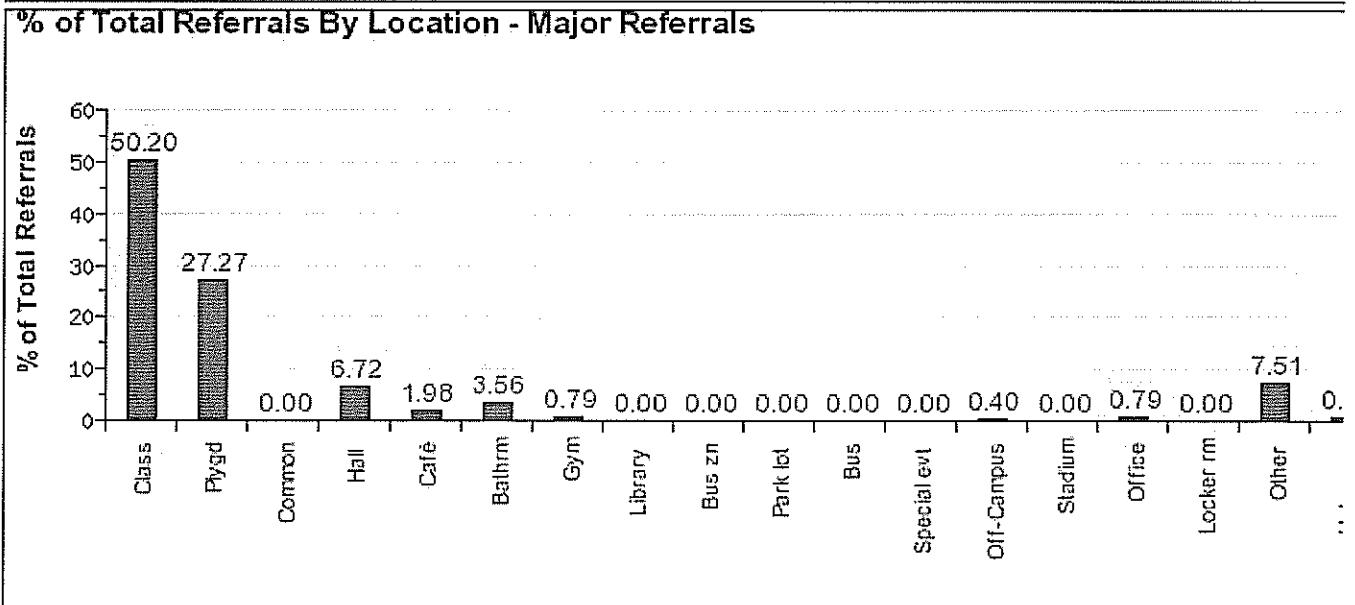
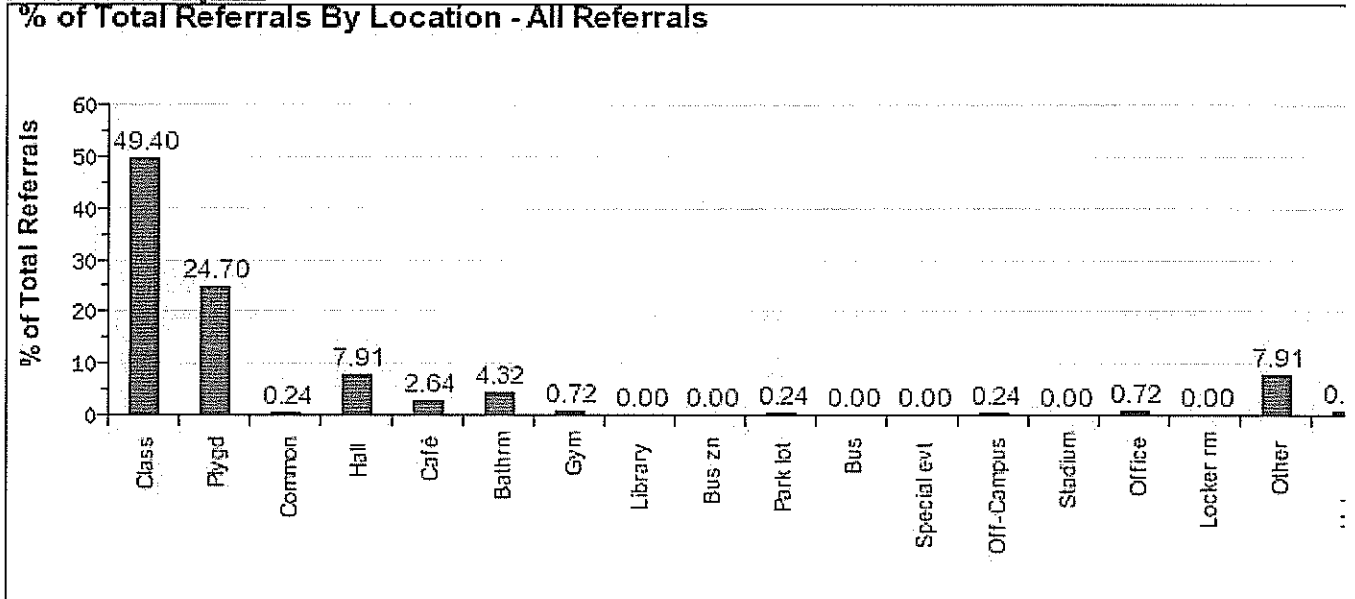


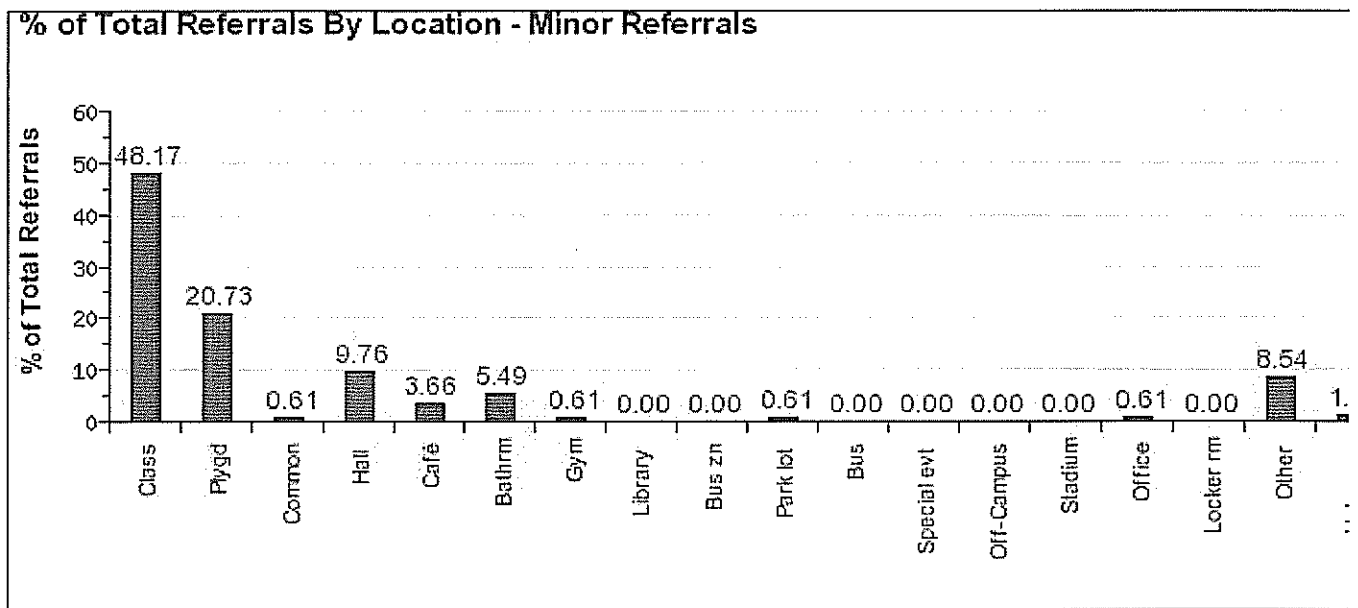
Referrals By Grade Per 100 Students - Major Referrals





Location Report



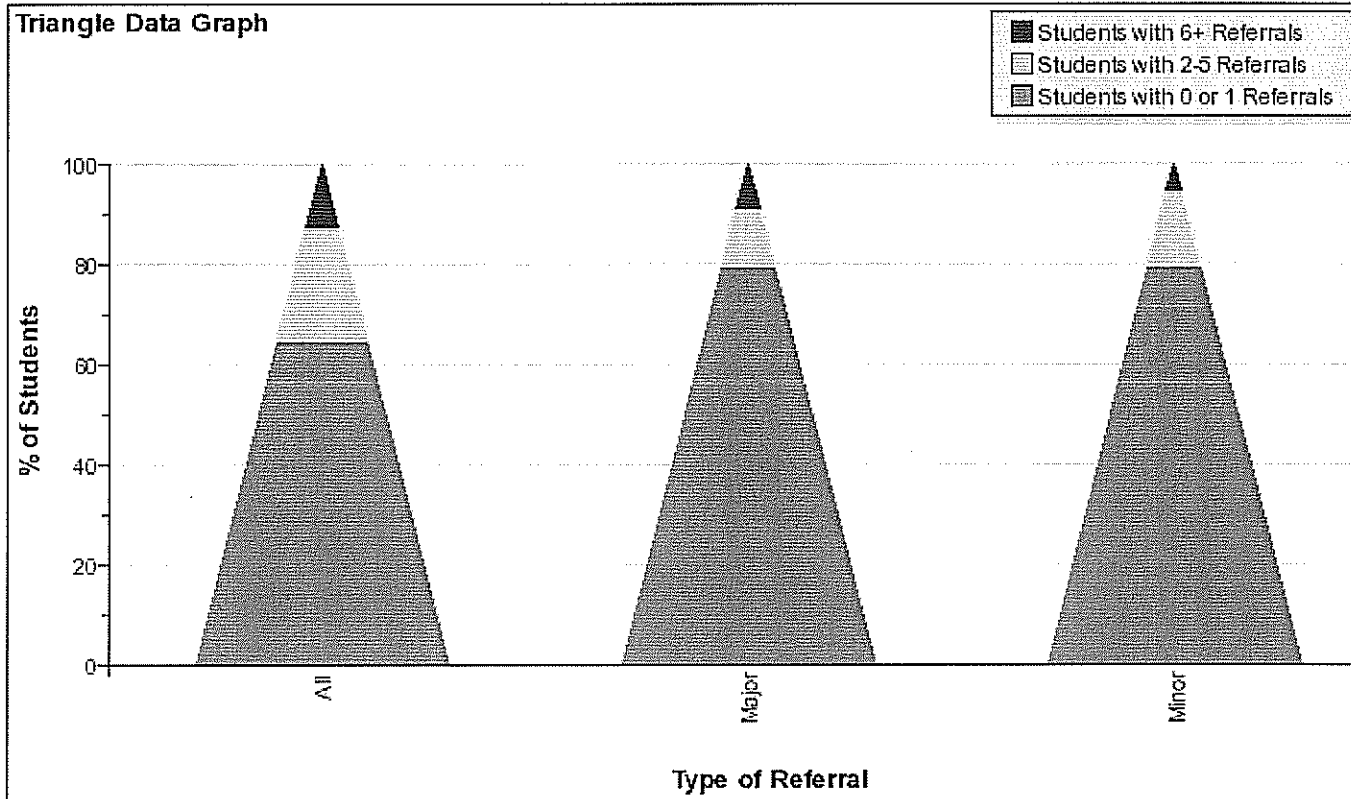


Suspension/Expulsion Report

	Events	Days	Students Contributing	Events Per 100 Students	Days Per 100 Students
In School Suspensions	18	9	15	10.78	5.39
Out of School Suspensions	13	8	7	7.78	4.79
Expulsions	0	0	0	0.00	0.00

Triangle Data Report

	# All	% All	# Major	% Major	# Minor	% Minor
Students with 0 Referrals	71	42.51 %	90	53.89 %	104	62.28 %
Students with 1 Referrals	37	22.16 %	43	25.75 %	29	17.37 %
Students with 0 or 1 Referrals	108	64.67 %	133	79.64 %	133	79.64 %
Students with 2-5 Referrals	38	22.75 %	19	11.38 %	25	14.97 %
Students with 6+ Referrals	21	12.57 %	15	8.98 %	9	5.39 %
Students with 9+ Referrals	12	7.19 %	5	2.99 %	2	1.20 %



2007 Fall MEAP Comparisons

3rd Grade		Math	Reading	Writing	ELA	
Cass City		95%	91%	69%	87%	
Caro		88%	86%	46%	79%	
USA		93%	88%	48%	85%	
Lakers		100%	100%	68%	100%	
Kingston		90%	88%	56%	83%	
Ubly		91%	90%	52%	85%	
Bad Axe		98%	94%	62%	89%	
Reese		97%	95%	69%	95%	
STATE AVE		90%	86%	57%	81%	
4th Grade		Math	Reading	Writing	ELA	Science
Cass City		96%	88%	45%	83%	
Caro		81%	85%	33%	78%	
USA		88%	83%	38%	76%	
Lakers		92%	94%	42%	86%	
Kingston		89%	91%	50%	83%	
Ubly		91%	96%	50%	88%	
Bad Axe		96%	99%	66%	98%	
Reese		95%	96%	38%	84%	
STATE AVE		86%	84%	44%	76%	